

Directions: cut out the pieces below, identify their correct location on the diagram on the right. Paste in your Interactive Science Notebook

Produces bile to break down fat

Where most chemical digestion takes place along with absorption by the villi

Mixes food with the enzyme pepsin and acids to break down food

Produces enzymes that flow into small intestine that help break down starches, proteins and fats.

Absorbs water from undigested food by using osmosis to place the water into blood vessels.

Muscular tube moves food to the stomach using peristalsis, or waves of muscle contractions

Waste is eliminated here

Stores bile produced by the liver

The beginning of the digestive process

Small Intestine

liver

Mouth

esophagus

Large Intestine

stomach

rectum

Pancreas

gallbladder

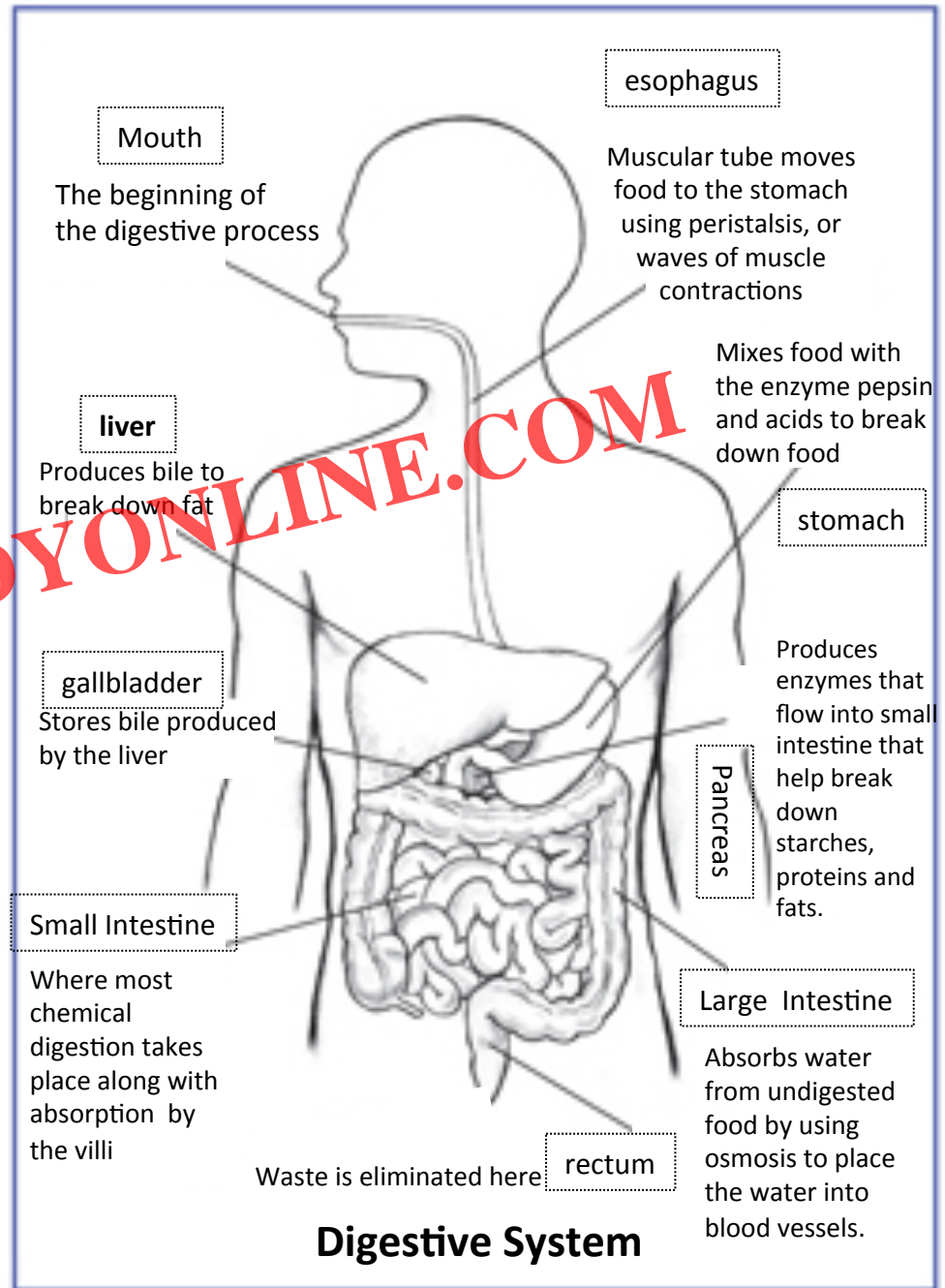
www.uniquestudyonline.com
prepared by :Sumeet Sahu

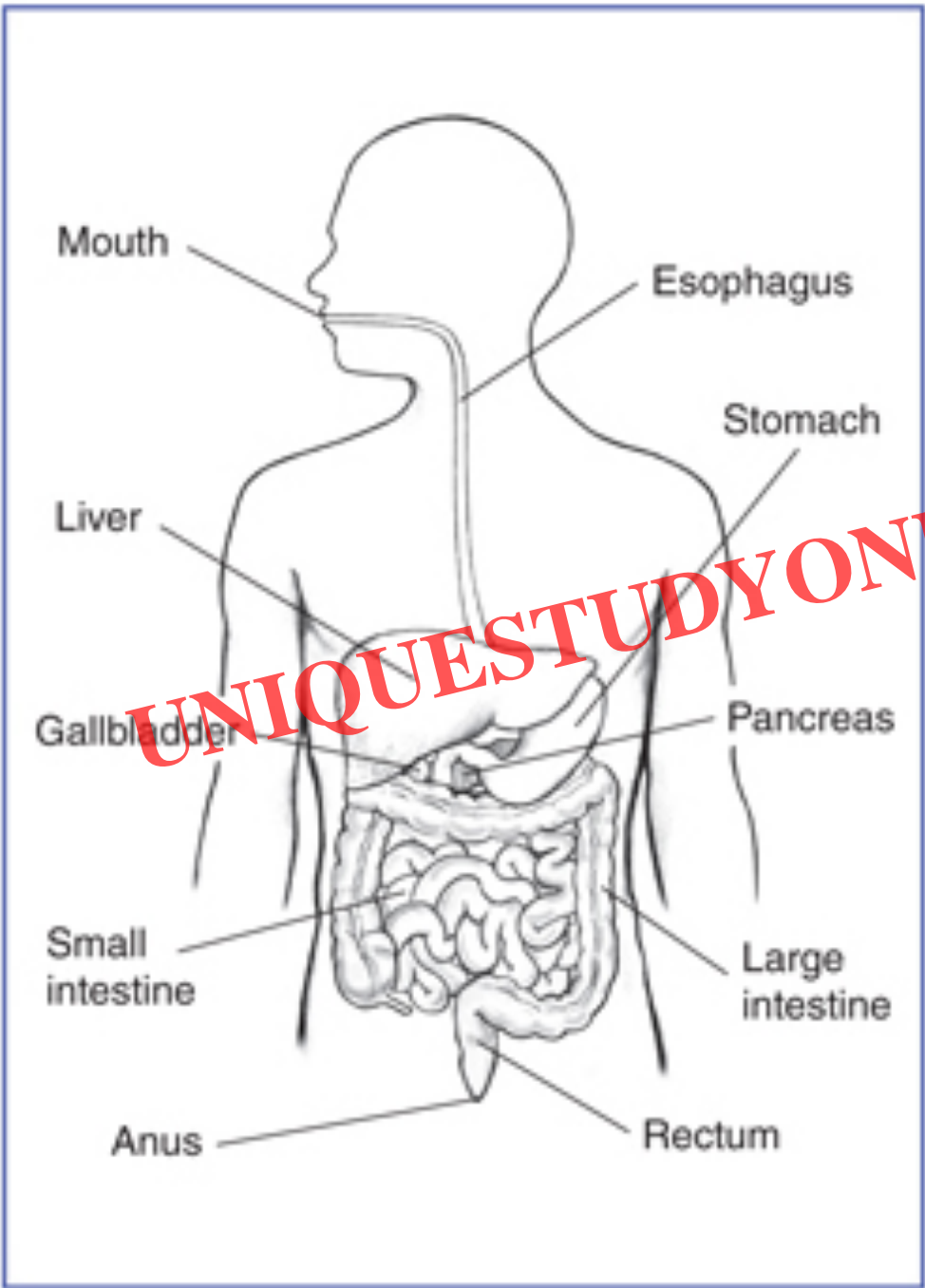


Digestive System

Directions: cut out the pieces below, identify their correct location on the diagram on the right. Paste in your Interactive Science Notebook

UNIQUESTUDYONLINE.COM





UNIQUESTUDYONLINE.COM